



# *The Breeze*

## *Of Park Point*

### Upcoming Events

**Lafayette Community  
Edible Garden Potluck**

**April 8th  
6PM at Lafayette**

**PPCC Meeting  
April 16th  
Social at 6:30  
Meeting at 7**

**Park Point Summer  
Youth Program  
Open House  
April 25, 5:30 – 7 PM  
at Lafayette**

**Come meet the staff,  
tour the park and  
register for the program**

**Park Point Garden Club  
Thursday, April 25th  
7PM. Contact:  
Kathy Jacobs  
722-2375  
All are Welcome**

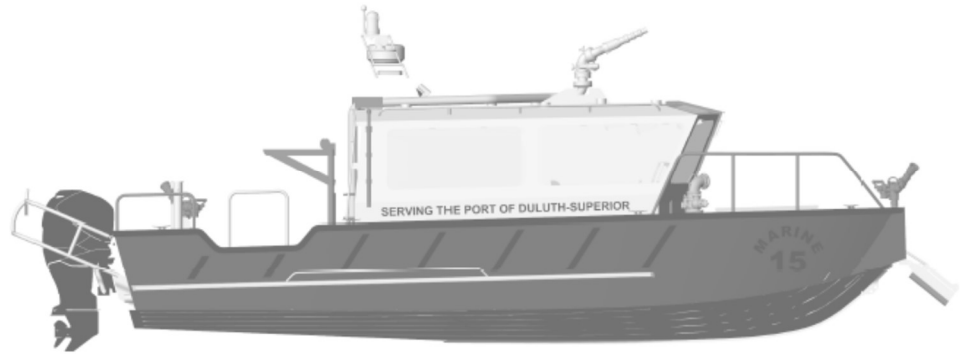
**Smelt Parade  
May 12th  
Canal Park**

**Park Point Rummage  
Sale June 14<sup>th</sup> & 15<sup>th</sup>  
8A.M. to 5P.M.**

**Park Point Art Fair  
June 29<sup>th</sup> & 30<sup>th</sup>**

**Duluth Women's Club  
Homes & Gardens Tour  
July 17th**

### **Now Patrolling Minnesota Avenue**



Maybe it could have cruised a few blocks after the March rains, but, no, this is the craft secured with a 2016 Port Security Grant. 25% of the funds were locally raised or supported by the DFD – and the PPCC. The vessel will be docked at Pier B Resort in June. The DFD quick response vessel was specifically designed and equipped for swift response to support all life safety operations including: search/rescue, evacuations, medevac/EMS, fire protection/suppression, environmental emergencies, and personnel transport. In addition, the vessel will be equipped to support hazardous material response needs in cooperation with Duluth Fires regional team. This high-speed maneuverable craft will also include: patient care space, FLIR night vision camera, high definition radar and GPS, side scan underwater sonar, and shallow draft. While the City stresses that the street – and the bridge – will remain the main point of access for emergency services, this will provide another option.

### **And Good News from the Bridge Supervisor**

Remember way back when I came to your community meeting? I talked about the proposed change to the summer bridge hours. Well that finally came through and we have final approval from the Coast Guard. The new bridge hours are:

**Lift on the hour and half hour...March 15<sup>th</sup> through December 31<sup>st</sup>!**

12 hour call for lift...January 1<sup>st</sup> through March 15<sup>th</sup>. So pretty much anytime the recreational boaters are on the water, the bridge will be lifting only on the hour and half hour. We will still be lifting on demand for all lake vessels, commercial vessels, vessels in distress etc. Just like we always have.

Thanks

David Campbell,  
Aerial Lift Bridge Supervisor

# *The Breeze*

Editor: Alan Dartanyan

[breezeditor@msn.com](mailto:breezeditor@msn.com) 726-0110

Submissions for the May issue are due  
by 4/27/19

## **Park Point Community Club officers:**

**President: Dawn Buck**

[parkpointcc@gmail.com](mailto:parkpointcc@gmail.com)

525-1764

**Vice President: Tom Griggs**

3429 Minnesota Ave.

[Thom0313@gmail.com](mailto:Thom0313@gmail.com)

**Secretary: Sheryl Robins**

722 Minnesota Ave.

720-6518

**Treasurer: Al Robins**

722 Minnesota Ave

720-6518

## **Committees:**

**Art Fair: Carla Tamburro**

[coordinator@parkpointartfair.org](mailto:coordinator@parkpointartfair.org)

218-428-1916

**Rummage Sale: Dave**

**Lavamaki** [pointer12@q.com](mailto:pointer12@q.com)

729-8925

## **Hospitality:**

**Diane Gould** 727-4067

**Ted Buck** 525-1764

**Lafayette Square Rentals:**

**Kraig Decker, Parks Permit**

**Coordinator** 218-730-4305

[www.duluthmn.gov/parks/registration](http://www.duluthmn.gov/parks/registration)

**The Postcard: Dawn buck**

[parkpointcc@gmail.com](mailto:parkpointcc@gmail.com)

**Sunshine: Pam Griggs**

[pamgriggs101@gmail.com](mailto:pamgriggs101@gmail.com)

218-260-6032

**Park Point Community Club**

**P.O. Box 16326**

**Duluth, MN 55816-0326**

[www.parkpointcommunityclub.org](http://www.parkpointcommunityclub.org)

## **President's Report**

Hi Neighbors,

On Saturday, I hopped on a bike and rode the length of the Point to see which creatures might be stirring. I heard a lot of seagulls, a few cardinals and saw optimistic boaters cleaning off their crafts despite the lingering ice. I ventured off of the dock near DSSA to ride down the bay to checkout Southworth Marsh. Paddling behind Southworth on a creature quest is one of my favorite PP adventures, am looking forward to the first outing, hopefully soon?

Biologist, naturalist & photographer "Sparky" (aka Mark Stensaas) showed some great photos of plants, birds and bugs who hang out on Park Point at last week's Knowledge and Nourishment presentation at St. Andrews. His awesome pics included a few shots from Southworth Marsh. Fun facts from my napkin notes: Of the approx. 430 bird species seen in MN, 300 of them have been identified on Park Point; there are two species of tumbleweeds on Park Point; the roots of beach grass can grow to 25 feet long. The week prior, geologist Tim Holst provided a geological history of the Great Lakes and Park Point. Is Park Point the longest baymouth bar in the world? How did the Temperance River get its name? Postglacial rebound-what's that? Thanks to St. Andrews for inviting the community in for this series, very nice gatherings for those with inquiring minds seeking good company & warm soup. For more on winged friends on Park Point, our neighbor Scott Wolff will speak on birding and how to prevent window bird strikes at the next PPCC meeting on 4/16, 7pm at Lafayette.

While on my Saturday joyride, I took a close look at the recently filled potholes and the overall horrible conditions on Lake Ave. near the Bridge to 13th. Thanks to all who took the time to provide feedback on the road conditions on the short survey in last month's Breeze. The ad-hoc street condition committee will be sharing the data and the comments with city administration, councilors and City of Duluth engineering and planning departments. A couple of neighbors have received word from the City that there will be more than pothole filling coming this spring- stay tuned for confirmation of that good news.

A Canal Park Advisory Group is in the formation stages and PPCC has been invited to participate. Stated purpose: "Advise the City regarding issues, redevelopment opportunities, and other changes in the Canal Park area for a 24-month period. Enhance communication between the Canal Park Business Group, DeWitt Seitz Business Group, the Park Point Community Club, and the City. Standing items: Lakewalk rehab/planning, streets and traffic, parking, public art, wayfinding and pedestrian circulation, redevelopment." Will keep you updated on this process and post information on the website: [parkpointcommunityclub.org](http://parkpointcommunityclub.org).

Planning for the 2019 PP Summer Youth Program is well underway. There is an Open House schedule for Thursday, April 25, 5:30-7pm at Lafayette. Registration information is on the Club's website: [parkpointcommunityclub.org](http://parkpointcommunityclub.org)

Looking forward to seeing you out and about on our extraordinary baymouth bar!

Dawn & Klaus, canine companion

**PPCC Minutes**

The March 19, 2019 Park Point Community Club meeting was called to order at 7:00pm by Dawn Buck, President. The regular business meeting agenda was suspended to the progress update for the Sky Harbor Runway Relocation project. Phase 3. Kaci Nowicki, planner from SHE Inc. was the first speaker. She spoke on the asphalt timeline, barge traffic versus truck traffic for the Point and also the possibility of having a larger runway than was discussed on the original plans. The possibility is extra money could possibly be available which might allow for the new runway to be 75’ wide versus the original 60’ width. The additional 15’ would have no impact on the environment. The length of the runway will remain the same as originally planned. A question was asked about whether the project would allow for larger planes to land at Sky Harbor. The answer given was no. The same size planes that currently use the airport landing would remain the same. The next speaker was engineer Benita Crowe from SHE Inc. Benita said the original Phase 3 was to finish by Labor Day. Revised finish date will be late Oct., 2019. The bituminous pavement is the only material that could possibly be truck delivered via the Point roads. The rest of the materials are barged.

**Approval of Minutes from the 2/19/2019 PPCC monthly meeting**

A motion was made and seconded to approve the 2/19/2019 minutes as they appeared in the Breeze. Remaining membership votes were all ayes.

**Treasurer’s Report – Al Robins**

|                   |                   |          |
|-------------------|-------------------|----------|
| Beginning Balance | February 1, 2019  | \$19,839 |
| Ending Balance    | February 28, 2019 | \$18,676 |

A motion was made and seconded to approve the Treasurer’s Report as given by Al Robins, Treasurer. Remaining membership votes were all ayes.

**COMMITTEE REPORTS**

**Art Fair – Carla Tamburro**

Art Fair is progressing on schedule. Next month the committee will be picking artists to participate. Looking for sponsorships. If you would like to help sponsor the Art Fair, please contact Carla for more information. The Art Fair is scheduled for June 29<sup>th</sup> and June 30<sup>th</sup>, 2019.

**Breeze – Alan Dartanyan**

Issuing of the Breeze is going well. Alan said the membership list will be printed in the April, 2019 Breeze. There will be only one list this year and that list will appear in the April Breeze.

**Environmental Committee – Dick Gould**

The trees for planting have already been ordered. Dick said they should be available for planting in the middle of May. There are 250 trees. Dick has asked for help planting and any ideas of where to plant would be appreciated.

**Hospitality Committee – Diane Gould and Ted Buck**

A well- deserved ‘Thank You’ for the treats you serve at the meetings. They are appreciated.

**Watch Committee – Everyone present**

A committee was formed that drew up a Pothole Survey. Members were asked to fill out the survey and leave at the end of the meeting. The committee was going to take the survey to the City. The survey can be taken up to March 29, 2019. Please mail the forms to the PPCC PO Box or send to John McKinney. The committee will then assemble the comments and take to the City for consideration. A vote was taken among the members present at the meeting as to whether the survey was a good idea. All the membership present agreed to forward to the City of Duluth the results of the surveys.

**Program Committee – David Poulin**

The April 16<sup>th</sup>, 2019 Park Point Community Club program will include a talk from Scott Wolf in regards to the migration of birds. Scott will speak on bird strikes (windows & etc.) and how to prevent.

**Rummage Sale – David Lavamaki**

Rummage sale planning is on track. The sale is scheduled to happen June 14<sup>th</sup> and June 15<sup>th</sup>, 2019.

**Summer Youth Program – Sally Buck and Rhonda Strum**

The planning of the Youth Program is in full swing. The ideal number of students to participate would be 30. The ages are from Kindergarten to age 12. For additional information on the program, please contact Sally Buck. Also, there is additional information on the PPCC website.

**Sunshine Committee – Pam Griggs**

One sympathy card was mailed last month from the PPCC.

**Old Business**

A second vote was taken to donate \$250 to the Smelt Parade. This is an annual parade. Jim Ouray spoke about the parade. The event is planned to take place on Mother’s Day, 5/12/2019. The place the construction of masks, costumes & etc. takes place at the old Johnson Furniture Store at 19<sup>th</sup> Ave W. and Superior Street. Volunteers are always needed for the success of the event. If you are available, please call Jim Ouray for more information.

(continued next page)

(minutes, continued)

A motion was made and seconded to approve the second vote for \$250 to be given to help support the event. The remaining members all voted with ayes.

**New Business**

Theresa O'Halloran-Johnson spoke to the PPCC members. She will be running for 3<sup>rd</sup> District City Council in Duluth. Update on status of Pontliana Woods, bayside wetlands. This property was mistakenly put up for sale. The City promised conservation protection years ago and agree to keep this area protected. This property is located at 17<sup>th</sup> St. Aerial Bridge lift schedule has been released. The bridge will raise on the half hours for all boats. The time duration has changed. Originally the bridge was lifted from March 15<sup>th</sup> through Labor Day Weekend. The new schedule of lifting will go from March 15<sup>th</sup> through December 31<sup>st</sup> on the half hour. The regular shipping traffic will be on demand. Diane Gould asked for someone who would deliver the Breeze from the 3100 block to 3300 block. The person who is normally scheduled to deliver is on vacation. There was a volunteer who said she would deliver these two blocks while the other person is unavailable.

There was a discussion about 'Beach Nourishment.' The purpose is to dredge the sand beach area to make wider beaches along the lake side of Lake Superior. If you would be interested in helping with this project, please contact Dawn Buck, by email.

A motion was made and seconded to adjourn the meeting at 8:00pm. Remaining membership votes were all ayes.  
Sheryl Robins

**Environmental report**

Spring is here and the birds are returning. Everything from Eagles to song birds. I saw a big flock of Robins this morning and way too many Crows. Please don't feed them, they are predators on other bird's nests!

Thank you, Mrs. Rutherford for the trees! She made a donation to the club for trees in her Husband's name. We will have about 350 white Pine to plant about the middle of May. Please call me if you can help or have an area that you would like to see planted with them.

Last Fall's weather washed up a huge amount of drift wood on the beach. I bet we will have some giant smelt fires this spring. If fires look too big, call the police. There is a limit on how much fire they can have.

Have a great spring and summer!

Dick Gould

**Art Fair Update**

The Park Point Art Fair is currently being juried. Artists will be notified by April 15. We have 182 applicants with 104 spots open for jurying artists. The applicants are of the highest quality and reflect a variety of media including: ceramics, photography, painting, printmaking, glass, wood, jewelry, sculpture, fiber and mixed media.

Please consider volunteering the weekend of the fair, June 29 and 30. It is a great way to get to know your neighbors and contribute to the goals of the community. Proceeds from The Fair fund the summer youth program, environmental projects and special projects and events hosted by The Park Point Community Club. If you haven't volunteered before or it has been more than a few years don't miss this year. We need you; as we ramp up to celebrate our 50th year in 2020 now is the time to get involved.

The Art Fair will have some new sponsors this year. If you or someone you know would be interested in sponsoring the event, now is the time to contact the coordinator, Carla Tamburro at [coordinator@parkpointartfair.org](mailto:coordinator@parkpointartfair.org) More about sponsorship in the next issue!

**Uodate on DNAP Green Space Protection of Pontliana Woods Wetlands  
from Jim Filby Williams, Director of Public Administration for the City of Duluth**

Let me clarify. What we have said in the past, and have every intention to follow through on, is not that the Pontliana Woods property would become part of the St. Louis River Natural Area but, instead, that we intend to solicit funds to acquire Pontliana for protection at the same time that we solicit funds to acquire unprotected portions of the St. Louis River Natural Area. We agree that Pontliana Woods deserves protection but it has never been our intention to use the Duluth Natural Area Program as the vehicle to accomplish that protection. Putting aside its other ecological merits, the property is too small and too isolated from other high quality habitat to meet the demanding DNAP criteria. Grant-funded acquisition of Pontliana will require us to place the parcel in permanent protection which will be sufficient to accomplish our shared goal.

Thank you for your advocacy. Please let me know if you have other questions or concerns.



Need music? Call: (218) 606-1670



*Len & Lois*

*Park Point Residents*

PO Box 15303  
Duluth, MN 55815

You're going to like what you see and hear!  
Check us out at: [www.lenandlois.com](http://www.lenandlois.com)



FRANCISCAN  
HEALTH CENTER

*Skilled Nursing and  
Transitional Care*

Building a Community around Care



3910 Minnesota Ave., Duluth • 218-727-8933

**Edina Realty.**

*Lynn Bentfield*  
Realtor, GRI

1515 London Rd.  
Duluth, Mn 55812  
Cell: 218 464 3790

[lynnbentfield@edinarealty.com](mailto:lynnbentfield@edinarealty.com)



*We are a people on the Way to  
knowing, loving, and serving God  
and neighbor!*

**Nourishment and Knowledge**

**Wednesday, April 10, 5:45 pm** will be our last presentation of the series. Bonnie Fuller Kask and Greg Peterson will speak about the Duluth Rowing Club!

**April 14 Palm Sunday Service 9:45 am**  
Procession of Palms, Reading of The Passion

**Holy Week Schedule**

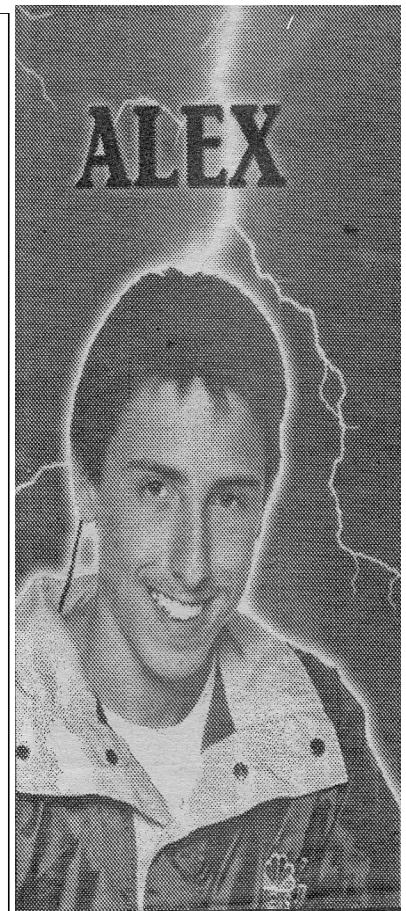
**April 18 Maundy Thursday Meal & Eucharist: 5:45 pm**, free & open to the public. Call Ginny at 218-269-6164, by April 10 to reserve a spot.

**April 19 Good Friday: Noon, Eucharist**  
**April 20 Easter Vigil: 7pm** in the Mission

The Rev. Marta Maddy  
Sunday Eucharist Service: 9:45 a.m.  
[standrewsbythelake.org](http://standrewsbythelake.org)  
2802 Minnesota Ave 218-727-1262  
[standrewsbythelakeduluth@gmail.com](mailto:standrewsbythelakeduluth@gmail.com)  
We are on Facebook

In Loving Memory of  
Alex Sahlberg  
August 12, 1986-April 13,  
2005

14 years have passed since your life here on earth came to a sudden end. And yet here we are still searching for a way for our hearts to mend. Our souls are so heavy with the grief we are under. Far greater than the force of Lightning and thunder. You were such an important person to us, like a member of our family tree. We wish we could unlock the feeling of pain, however: there is no key. You were so loved by us, this we want you to know. In life and in death that feeling continues to grow. Our memories of you are so great and so divine. Like the power and strength of a ray of sunshine. There are no words to express the way we are feeling today. We miss you so much, in the worst way.  
Remembered with love by family, friends and neighbors



# This Is Us

## 2019 Park Point Community Club Membership List (so far!)

Alspach ,Edward & Ellie  
Anderson, Brooks & McDonnell ,Coral  
Anderson, Lyle  
Beechler, Lynn  
Bentfield, Lynn and Bill  
Berdan, Frank & Kathi  
Bernick Chas & Debora  
Bohlman, Richard & Benita  
Bray, John & Karen  
Buck, Dawn & Ted  
Buck , Sally & Tim  
Borg, Kathryn  
Bostrom, John & Stephenie  
Brown, Barbara  
Brown, Sue  
Brozic, Tom & Jean  
Bye, Doug & Lynn  
Cantoni, Georgina/Jheri McMillan  
Carlson, Sandra & Gene  
Catanzarite, Kathy  
Cervenka, Debbie/ Litvinoff, Arlene  
Cleveland, Jerry & Anderson , Marge  
Christainson ,Malcolm & Shelia  
Cohen, Jan  
Crain, John  
Crain, MaryLou  
Curran, Tom & Linda  
Curtis, JC  
Dale, Karen & Miller, Jan  
Dartanyan, Alan & Cheryl  
Davern, Char  
Doty, Diane  
Dunlap, Ellen  
Dunleavy, Pat  
Dunleavy ,Gloria  
Durbin, Mary  
Elden, Mark  
Erickson, Mark & Sue  
Feyen, Ann and Bob  
Fierek, Bob, Maria, Max, Ben  
Fisher, Harry & Pat  
Fiero, Dolores  
Gaidis, Mike & Mary  
Gallice, Ritch & JoAnn  
Gould, Dick & Diane  
Griggs, Pam  
Griggs, Patricia  
Griggs, Tom  
Graham, Cheryl/Margitan, Marie  
Grover, Mary & Brian

Haavik, David  
Haller, Sigurd  
Hallsten, Mary & Jerry  
Hansen, Drew & Dana  
Harrison, Heidi  
Harrison, Judy  
Harshan, Nate  
Hayden, Paul & Cindy  
Heder ,Mary  
Heyesen, Jon & Kyle  
Heyesen, Wayne L  
Hoelscher, Dennis  
Hooper ,Elizabeth Gay  
Howe, Warren/Karon, Jan  
Hughly, Red and Mary  
Jackson, Ken  
Johnson, Denny & Sue  
Johnson, Steve/Korndrath, Carol  
Kantonen, John & Jeanne Jeneatta  
Kapsner, Jake & Tamburro, Carla  
Kerns, Gale, & Jeri  
Kerns, Carolyn  
Kerns, Gordon  
Krenelka, Glen & Rene'  
Lavamaki, Dave & Diane  
Lent, Bob & Carole  
LeSage, Deven & Kristen  
Lombardi, Richard  
Long, Bill & Truel, Jan  
Lunning, Bruce & Stephanie  
Maxwell, Christina (parkie & Ann  
Marge, James & MaryAnn  
Marpe, Donald & Ellen  
Mattson Jim & Tricia  
McGough, Larry & Maureen  
Mackay, Tom & Liz  
McKinney, John & Suzanne  
McLeete, Loranda & Paul  
Meagher, Jerry & Harriet  
Medlin, Joe  
Mitchell, Jim & Haugejorde, Jayne  
Murray, Judy  
Neinstadt, Anita  
Nelson, Brian  
Odden ,Nancy/Britton, Doug  
O'Neil ,Dan  
Olson, Nancy/Glass, Gary  
Ouray, Jim/Mock, Rachael  
Pajunen, Brigid  
Paulson, Jeanette  
Pedersen, Sherry & Jeff

Pegg, Lynn Clark  
Pretrowski, Walter & Geri  
Peters, Patti  
Peters, Susan  
Peterson, Greg & Jenny  
Peyton, Beryl  
Peterson, Richard & Patricia  
Poulin, Dave  
Puglisi, Frank & Marian  
Quackenbush, Mary Anne  
Ralph, Charles R  
Rauschenfels, Tom & Kris  
Reyers, Jan & Bonnie  
Remer ,Dennis & Laura  
Renken, Arlene  
Robins, Al & Sheryl  
Rogers, Jim  
Rogers, Jim and Tina  
Roise, Charlene  
Rolle, Sharon  
Ross, Mary  
Rutherford, LeAne  
Schmidt, Susan/Hadland, Jerry  
Schwartz, Travis & Shannon  
Sedgwick, John & Nancy  
Shaw, Nancy & Richard  
Slattery, Sue  
Shimmin, Dale/ Kaim, Lyn  
Smith ,Hamilton  
Speer, Jeff & Kari  
Sobczak, Tim & Liz  
Soderstrom, John  
Sola, Dale & Betty  
Solin, Sue & Glenn  
Spooner, Terry & Beth  
Stuermer, Jeff & Laura  
Swanson, Bob  
Taggart, Nancy  
Tanttari, Jacob & Kaye  
Thiry, Marianne  
Treuer, Paul & Mary  
Tripp, Doug and Rosemary  
Trolander, Judy  
Wallerstien, Michele  
Wegner, Mr Lynn  
Wolff, Scott/Hall, Beth  
Vanderwerp, Mary/Ball, Rick  
Van Dyken  
Walbridge, Natdlija  
Welles, Mack  
Young, Joyce

## **News from the Lafayette Community Edible Garden— Past, Present, Future**

### **“Down and Dirty in the Dirt”**

On March 11, Steve Headman, UMD Biology Professor Emeritus and St. Louis County Master Gardener, enriched the gardening knowledge of 30 potluck attendees with “Down and Dirty in the Dirt.” He packed that talk with information on the three types of soil, soil testing, and no-till gardening and amended our knowledge about organic fertilization.

Steve said soil is largely defined by the size of its particles from clay (finest) to sand (largest) Loam (medium) is best for gardening. But soil composition doesn't tell us how fertile it is. That's where composting and soil testing come in. Soil testing reveals what levels of nitrogen, phosphorous, and potassium are present. Nitrogen promotes vegetative growth; phosphorous, transfer of energy in plants; and potassium, root development (think potatoes). Steve recommended the University of Minnesota Soil Testing Lab and demonstrated how to interpret a report from that lab. Specific recommendations from the report suggest what the soil needs, be it amendments such as sulfate, blood meal, nitrogen-fixing bacteria, milorganite, bone meal, manure, super phosphate, or potash, to name a few.

Further encouraged by Steve, LCEG is already looking at the benefits of no-till gardening, planting clover or rye in the beds, and covering that soil in the fall. To learn more about no-till, Google “no-till gardening with raised beds” or *Sunset* magazine's “guide to no-till gardening. Meanwhile, keep those leaves and that compost coming.

### **Planning for Planting**

At the April 8<sup>th</sup> potluck (Monday, 6 p.m.) we will feature planning for planting at the garden. We will find out if there is more than rutabaga on the horizon. we will have a special orientation for our new garden members. Please plan to join us in planning for planting in May.

### **Talk about Ticks**

Our potlucks are the second Monday of the month. On May 13<sup>th</sup>, Dr. Ben Clarke, Associate Professor in the Biomedical Sciences Department of the UMD Medical School, will talk about ticks. He has been dubbed “the Tick Warrior” because he and his students have been tracking and analyzing ticks—particularly deer ticks. Where they are the thickest, how likely they are to be carrying Lyme disease, how to avoid them...will be addressed in this valuable presentation. Gardeners, photographers, hikers, yard maintainers and anyone venturing outside will profit from this tick talk. Please join Ben at the potluck. This could be a health-and life-saving event. Member or not, you are invited. Bring your own plate, cutlery and a dish to share. We welcome you.

--LeAne Rutherford

## **2019 Park Point Rummage Sale** Friday & Saturday June 14 & 15 2019

1. Here it comes once again. Our annual kickoff to the busy tourist season. Although you have a couple of months, it is not too early to start looking around the house and see what you may want price and put on display during the rummage sale.

2. Porta Pots will be located at the eighth street pumping station, s-curve parking area, 17th St, 20th St, 23<sup>rd</sup> St, and 30th St.

**IMPORTANT:** All sales must be located on PRIVATE PROPERTY only. This includes any and all food vendors. There will "not" be any public property for use during the sale.

Please remember that that the rummage sale is held separately from the Art Fair. Please support our "very important" art fair by not having any rummage out for sale.

Everybody knows what to do, if you have new neighbors please speak with them so they will know when and when not to have a sale and why.

Dave Lavamaki, Chairman 729-8925

## *The Breeze*

Park Point Community Club

P.O. Box 16326

Duluth, MN 55816-0326



Park Point Resident

### Numbers you can use

Got (non-emergency) issues you'd like to discuss, but don't know whom to call?

Here are some helpful contacts

Public Works and Utilities 24 hr. emergency contact numbers:

Natural Gas 730-4100, Streets, Water & Sewer 730-4000

Lift Bridge Supervisor Dave Campbell 723-3387

Community Police Officer Ethan Roe 218-730- 5747 [eroe@duluthmn.gov](mailto:eroe@duluthmn.gov)

Dog issues: [clane@duluthmn.gov](mailto:clane@duluthmn.gov)

City Councilor Em Westerlund (218) 355-1137 [ewesterlund@duluthmn.gov](mailto:ewesterlund@duluthmn.gov)

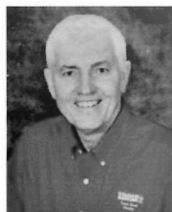
**COLDWELL  
BANKER** 

**East West  
Realty**

(218) 730-2338 OFFICE  
[cbeastwestrealty.com](http://cbeastwestrealty.com)



Each Office is Independently Owned and Operated



**TOMMY ARCHER**  
Realtor

(218) 393-5995 CELL  
[tommyarcher54@gmail.com](mailto:tommyarcher54@gmail.com)  
1732 London Road  
Duluth, MN 55812

Editor:

I picked up from 13<sup>th</sup> Street to 16<sup>th</sup> on the beach and I only found 2 medium-sized bags of droppings that dog owners inadvertently left behind. Amazing, considering the large volume of usage at the 13<sup>th</sup> Street entrance to the Lake! People do try to keep our environment pristine and healthy.

Vicki McNabney and Sammy



