

DULUTH-SUPERIOR HARBOR MAINTENANCE DREDGING AND BEACH NOURISHMENT ON MINNESOTA POINT: 2020

Who (Project Partners)

- The U.S. Army Corps of Engineers (USACE)
- Minnesota Pollution Control Agency (MPCA)
- City of Duluth
- Duluth Seaway Port Authority (DSPA)
- Minnesota Department of Natural Resources (MNDNR)
- State Historic Preservation Office (SHPO)
- Federally Recognized Tribes

What

- Dredge the federal navigation channel in the Duluth-Superior Harbor and place approximately 50,000 cubic yards of material on the northern end of Minnesota Point.

Why

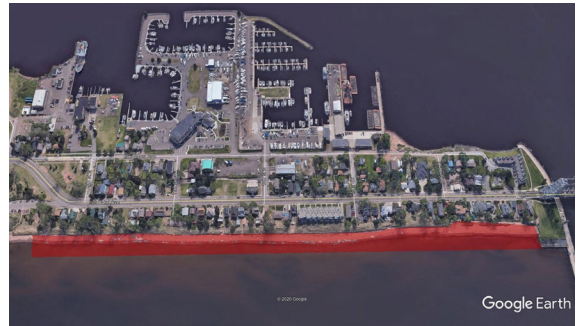
- USACE is responsible for maintenance of the federal navigation channel. Dredging allows ships to safely navigate in the harbor.
- The City of Duluth requested that the dredged material be used to nourish the Minnesota Point shoreline to temporarily restore eroded beach and dune habitat.



When

- Early August through late September, 2020.
- Placement operations –24 hours a day, 7 days a week

Where



Benefits of beach nourishment

- Temporarily stabilize eroded shoreline and dune habitat along Minnesota Point
- Provide habitat for beach grass and other endangered/threatened species



CAUTION: What you will see in the area

- Heavy equipment on the beach moving newly placed material
- Barges and transfer box on harbor side for pumping material
- Pipeline crossing under the Lift Bridge and extending along the beach to transport material
- Active placement area – no public access (signs present)



Is it Safe? Yes ✓

- Harbor and beach sediments have undergone extensive chemical and physical testing
- MPCA has issued a Water Quality Certification approving beach nourishment
- Placed materials have been evaluated and pose negligible risk to humans, aquatic organisms, and wildlife
- Concentrations of contaminants of concern are 100 times LOWER than levels protective of beach users, including residents and children

Questions or Comments:

U.S. Army Corps of Engineers
Detroit District
1-888-694-8313
lrepao@usace.army.mil
477 Michigan Avenue
Detroit, MI 48226-2550

Minnesota Pollution Control Agency
1-800-657-3864
Info.pca@state.mn.us

City of Duluth
1-218-730-5000
Info@duluthmn.gov

Habitat Restoration Projects in Duluth-Superior Harbor Beneficially using Dredged Material

